

THE GALLERY OF

# EVERYTHING

## JANET SOBEL AND THE 20TH CENTURY WOMEN

10TH OCTOBER TO 14TH NOVEMBER 2021



*Artists at the Preview* (c 1943) enamel on canvas, 60 x 75 x 1.5 cm / 23<sup>5</sup>/<sub>8</sub> x 29<sup>1</sup>/<sub>2</sub> x <sup>5</sup>/<sub>8</sub>"



The Gallery of **Everything**  
4 Chiltern Street  
London W1  
[www.gallevery.com](http://www.gallevery.com)  
+44 20 7486 8908  
[@gallevery](https://twitter.com/gallevery)  
[ge@gallevery.com](mailto:ge@gallevery.com)

Press  
Rebecca Ward  
+44 7977 071 450  
[rebecca@rebeccaward.co.uk](mailto:rebecca@rebeccaward.co.uk)

Opening Hours  
Monday to Saturday  
11am to 6.30pm  
Sunday  
2pm to 6pm

Office  
+44 20 7957 5323  
[pr@musevery.com](mailto:pr@musevery.com)

THE GALLERY OF

# EVERYTHING

In 1945, Peggy Guggenheim presented the project *31 Women* at her legendary venue, Art of This Century Gallery. The following year, a sequel entitled simply included the all-over innovator **Janet Sobel**, subsequently singled out for a solo show at Guggenheim's mid-town Manhattan space.

In homage to these quintessentially New York stories, The Gallery of **Everything** presents **20TH CENTURY WOMEN**: a salute to the feminist perspective of one of the 20th Century's most visionary gallerists and collectors - and an adjunct to our gallery's **Janet Sobel** presentation at Frieze Masters.

**20TH CENTURY WOMEN** features sixteen artists and makers from a range of disciplines, linked by a common commitment to their craft and a categoric refusal to adapt to the normative requirements of the masculine and Caucasian art worlds of their time. Featured artists include: **Hilma af Klint**, **Judith Scott**, **Jann Haworth**, **Unica Zürn**, **Eva Švankmajerová**, **Mary Barnes**, **Niki de Saint Phalle** and others.

The exhibition **20TH CENTURY WOMEN** will occupy the ground floor of The Gallery of **Everything** on Chiltern Street, complemented by a lower ground installation of works on paper by **Janet Sobel**, who is the subject of the gallery's Frieze Masters' Spotlight presentation, curated by Laura Hoptman.

\*\*\*

Featured artists:

<b>Mary Barnes</b>	(1923-2001)	psychoanalytic case-study and counter-cultural author;
<b>Marian Spore Bush</b>	(1878-1946)	New York socialite and monochromatic visionary;
<b>Aloïse Corbaz</b>	(1886-1964)	hospitalised author of a fictional visualised romance;
<b>Minnie Evans</b>	(1892-1987)	self-taught technician of a botanical mysticism;
<b>Guo Fengyi</b>	(1942-2010)	Chinese scroll painter of interior harmonic balance;
<b>Olga Fröbe-Kapteyn</b>	(1881-1962)	architect of a post-spiritualist visual vocabulary;
<b>Madge Gill</b>	(1882-1961)	mediumistic vessel for the illustrations of her spirit-guide;
<b>Jann Haworth</b>	(b 1942)	cult co-inventor of the 1960's British cultural aesthetic;
<b>Hilma af Klint</b>	(1862-1944)	secretive author of a spontaneous cosmic theory;
<b>Gertrude Morgan</b>	(1900-1980)	Warhol-feted preacher, musician and bible-painter;
<b>Niki de Saint Phalle</b>	(1930-2002)	famed fabricator of autobiographic pop;
<b>Judith Scott</b>	(1943-2005)	non-verbal Californian fabric artist and sculptor;
<b>Eva Švankmajerová</b>	(1940-2005)	iconic Czech surrealist painter and puppeteer;
<b>Emma Kunz</b>	(1892-1963)	renowned creator of hand-drawn healing charts;
<b>Anna Zemánková</b>	(1908-1986)	illustrator of her own private imagined botany;
<b>Unica Zürn</b>	(1916-1970)	author of anagrammatic poems and automatic image;

THE GALLERY OF  
**EVERYTHING**



Mary Edith Barnes *The Triumph of Saint Michael, Archangel* (1976)  
 oil on canvas, 71.12 x 60.96 cm / 28 x 24"



Marian Spore Bush *Snake Woman* (c 1938)  
 oil on canvas  
 152.4 x 106.7 cm / 60 x 42 1/8"



Aloïse Corbaz *Orgues Saint Jacques* (c 1945)  
 colour pencil, graphite, foil, on packing paper  
 79 x 50cm / 31 1/8 x 19 3/4"



Guo Fengyi *untitled* (1991)  
 ink and watercolour on calico  
 148 x 47 cm / 58 1/4 x 18 1/2"



Minnie Evans *untitled* (1963/66)  
 oil, ink, graphite, mixed media on paper  
 38.1 x 50.8 cm / 15 x 20"



Olga Fröbe-Kapteyn *untitled* (c 1930)  
 photographic print  
 22.9 x 16.5 cm / 9 x 6 1/2"

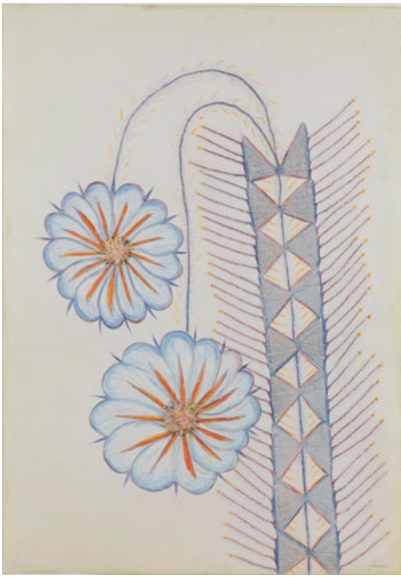


Madge Gill *untitled* (c 1940/50)  
 ink on postcards  
 14 x 9 cm / 5 1/2 x 3 1/2" each



Unica Zürn *untitled* (1955)  
 ink on paper  
 50 x 60 cm / 19 3/4 x 23 5/8"

THE GALLERY OF  
**EVERYTHING**



**Anna Zemánková** *untitled* (c 1970)  
 pastel, ink, thread on paper  
 63 x 44 cm / 24¾ x 17¾"



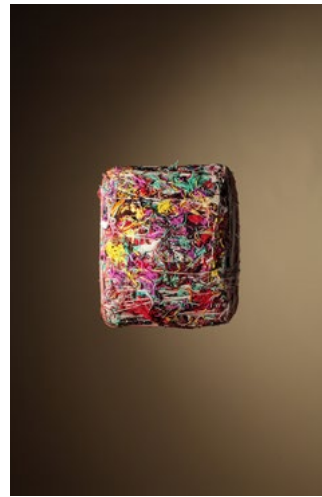
**Jann Haworth Lindner** *Doll* (1970/80)  
 fabric doll  
 123 x 68 x 49 cm / 48¾ x 26¾ x 19¼"



**Hilma af Klint** *untitled* (1934)  
 watercolour on paper  
 49 x 34 cm / 19¼ x 13¾"



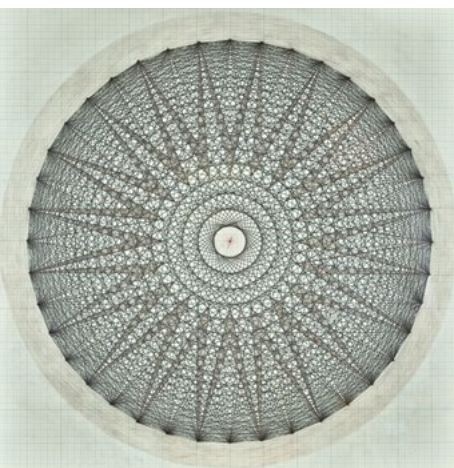
**Alice Neel** *untitled* (1936)  
 ink on paper  
 27.6 x 34.9 cm / 10 7/8 x 13 3/4"



**Judith Scott** *untitled* (1993)  
 wool, cotton, string, wood  
 65 x 56 x 22.5 cm / 25 5/8 x 22 1/8 x 8 1/4"



**Guo Fengyi** *untitled*  
 ink and watercolour on calico  
 141 x 43 cm / 55½ x 16¾"



**Emma Kunz** *untitled*  
 crayon, pencil on paper on cardboard  
 70 x 70 cm / 27½ x 27½"



**Niki de Saint Phalle** *Dr. Mabuse* (1964)  
 textiles, wool, paper and found objects on wire mesh  
 80 x 65 x 21 cm / 31½ x 25 5/8 x 8 1/4"

THE GALLERY OF  
**EVERYTHING**



THE GALLERY OF **EVERYTHING**  
[www.gallevery.com](http://www.gallevery.com) // @gallevery

The Gallery of **Everything** is a platform for alternative, neurodiverse and non-academic art-makers. Its roster includes contemporary and historic art brut, so-called outsider artists, and vernacular objects from the 1800s to the present day.

The gallery engages with a wide network of institutions, artists and curators to place material into major private and public collections. Proceeds support The Museum of **Everything**, a non-profit organisation and the world's only itinerant institution for artists and makers beyond the cultural mainstream.



THE MUSEUM OF **EVERYTHING**  
[www.musevery.com](http://www.musevery.com) // @musevery

The Museum of **Everything** opened in London in 2009 and has welcomed over a million visitors to its large-scale installations in Britain, Europe, Russia, America and Australia.

As the UK's leading advocate for non-academic and private art-making, the museum functions as an international exhibitor, archive and activist, collaborating with artists, curators, writers and institutions. These include Tate Modern (UK), Hayward Gallery (UK), Pinacoteca Agnelli (Italy), Kunsthal Rotterdam (Holland) and Garage (Russia).

The Museum of **Everything** is a lobbyist for the inclusion and display of all forms of *non-canonical* art. In 2013 it partnered with the 55th Venice Biennale, during which it was profiled by the BBC in Turning the Art World Inside Out. The museum is also known for its immersive installations, which it designs, curates & installs, most recently presented at Mona in Australia in 2017/18.